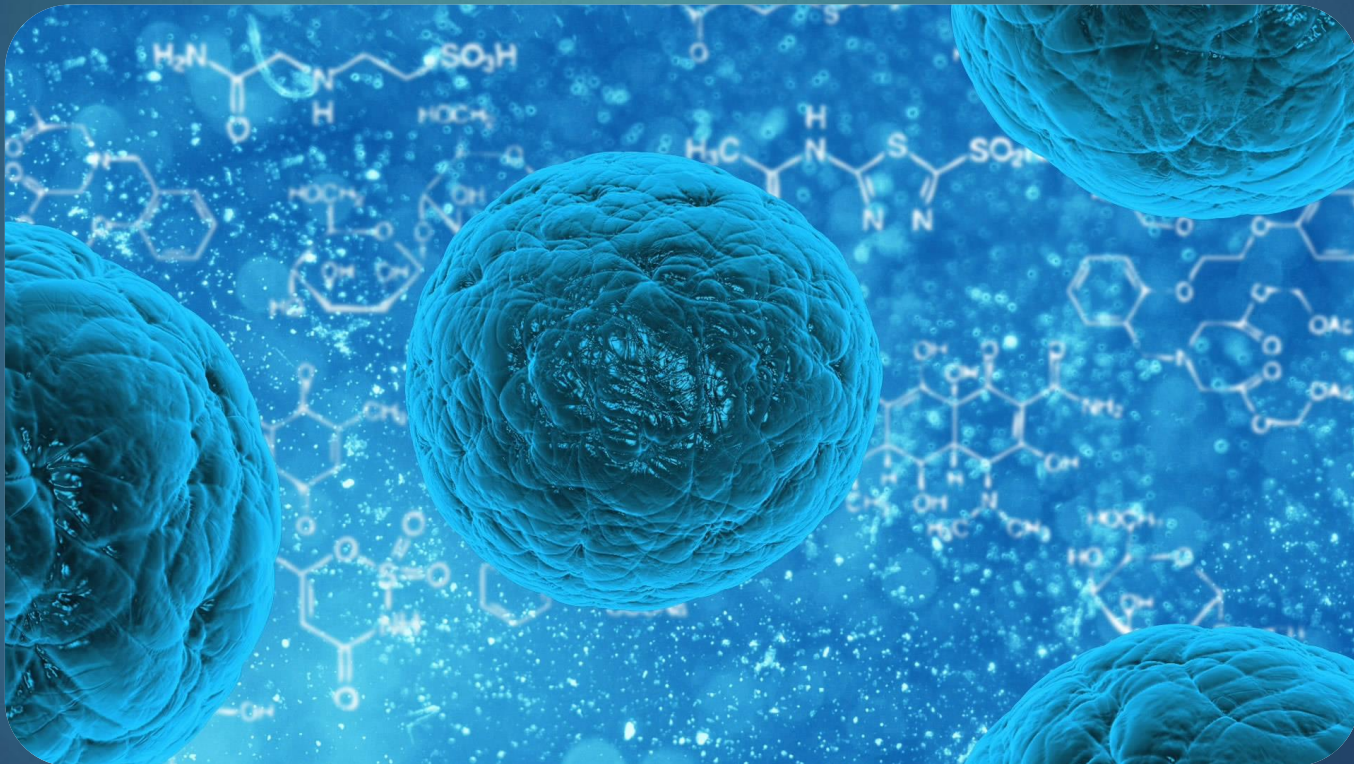


In the name of God

1

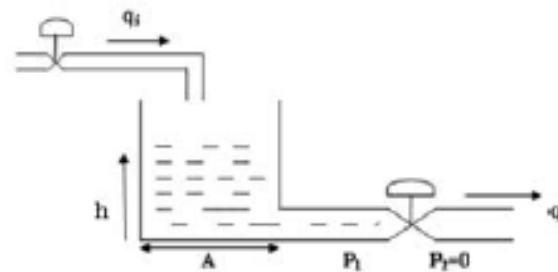
Modelling biological systems

S.Ali.Zendehbad



Example of Hydraulic system

- Draw the electrical model for this system



- solution

$$\begin{cases} q_c = q_i - q_o \\ V = A \cdot h \end{cases} \longrightarrow q_c = q_i - q_o = \frac{dV}{dt} = A \frac{dh}{dt}$$

Example of Hydraulic system

- solution



If q_i is produced with a supplier we can put the current supply directly

If production of the q_i is influenced by pressure we should use Thevenin's Theorem

Thermal System

- **Primary variables**
 - Longitudinal variables : heat flow (or thermal power)
 - Transverse variables : temperature
- **Secondary variables**
 - Thermal resistance
 - Thermal Capacitors

Thermal System

$$\text{electrical: } R = \frac{\text{volt}}{\text{ampere}} = \Omega$$



$$\text{thermal: } R_{\theta} = \frac{\text{temperature}}{\text{power}} = \frac{\Delta T}{P} = \frac{^{\circ}\text{C}}{\text{w}}$$

$$\text{energy: } Q = MC(T_2 - T_1)$$



$$\text{power: } P = \frac{dQ}{dt} = MC \frac{d\Delta T}{dt}$$

- Thermal systems don't have inductor so these systems only include RC circuit
- If heat is pass through different layer the order of the system is defined by number of the layers. Like heat sinks that is used for transistors

Modeling Analogies

- Two classes of variables

System	Flow variable	Effort variable
Electric	current	voltage
Translational	velocity	force
Rotational	angular velocity	torque
Hydraulic	volume flow	pressure difference
Thermal	heat flow	temperature

Traffic System

- **Primary variables**
 - Longitudinal variables : traffic flow
 - Transverse variables : traffic pressure
- **Secondary variables**
 - Traffic resistance : narrow way
 - Traffic capacitor : parking
 - Traffic inductor : automobile inertia
 - ON-Off switch : traffic light



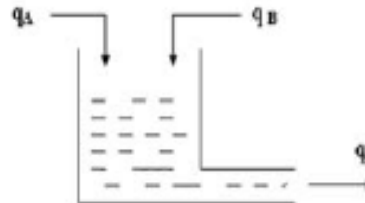
These variables were introduced just as a suggestion

Psychology System

- Used for modeling of the human behavior
- Suggested variables :
 - Mental pressure
 - Mental capacitance
 - Stress
 - motivation

Chemical System

- Used for modeling the chemical reaction and fluidity behavior of system
- In these models usually use volume flow for study fluids and mass flow for input material to system
- Example:
Write the mathematical equation for shown system



Chemical System

- Definition

q : *Volume Flow*

c : *Volume Density*

q_o : *Output Volume Flow*

V : *Total Volume*

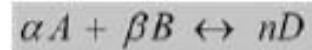
r_A^+ : *Production Rate of A*

r_A^- : *Diminution Rate of A*

$$r_A = r_A^+ - r_A^-$$

Chemical System

- Solution



- If $\alpha = \beta = 1$ then $A + B \leftrightarrow nD$ $r_A = r_B$

$$r_D = nr_A = nr_B = nr = r_D^+ - r_D^-$$

$$q_A \rho_A - q_o c_A - rV = \frac{d(C_A V)}{dt}$$

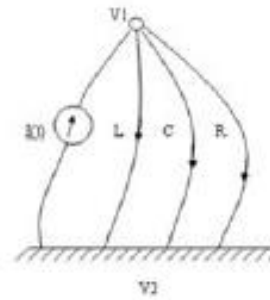
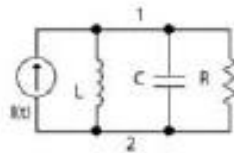
$$q_B \rho_B - q_o c_B - rV = \frac{d(C_B V)}{dt}$$

Linear Graph

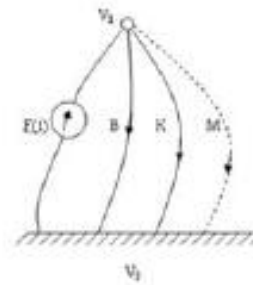
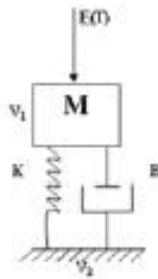
- A graphical method for modeling and evaluating complex and mixed systems
- The same representation for all systems in any field (electrical, mechanical,...)
- The first and important stage of this method :
 - determine the subsystem
 - Determine the interconnection in each subsystem
- Electrical Machine: electric system, mechanic system,...
- For Example In the mechanical system connection of elements are considered as interconnection point. In these systems because all of the particle of the mass have the same velocity therefore mass element aren't located between two interconnection points and connected to ground

Examples

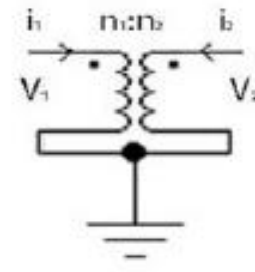
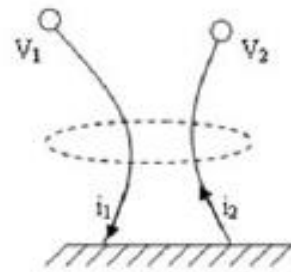
Example1:



Example2:



Transformer

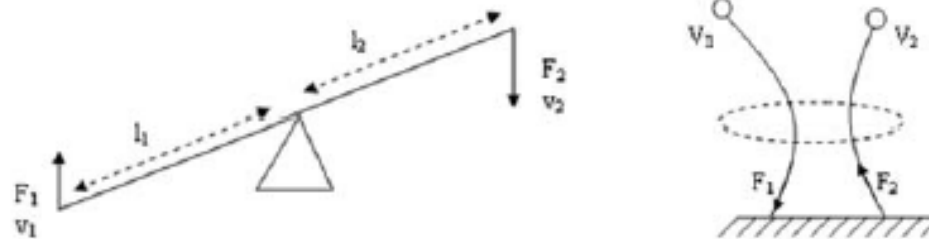


$$\frac{V_1}{V_2} = \frac{n_1}{n_2} = \frac{I}{n}$$

$$V_1 i_1 = V_2 i_2 \longrightarrow \frac{V_1}{V_2} = \frac{i_2}{i_1} = \frac{1}{n}$$

Lever

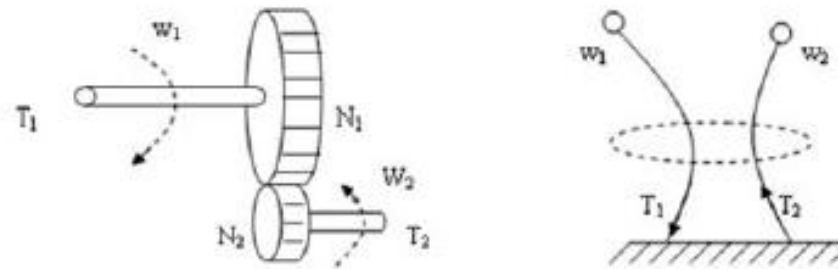
- Levers act as transformers of force and velocity



$$\left. \begin{array}{l} T_1 = T_2 \\ F_1 l_1 = F_2 l_2 \\ \frac{V_2}{V_1} = \frac{l_2}{l_1} \end{array} \right\} \Rightarrow \frac{V_2}{V_1} = \frac{F_1}{F_2} = \frac{l_2}{l_1} = n$$

Gear Box

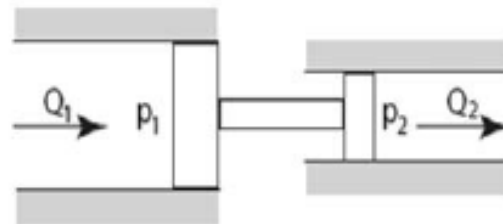
- Gear boxes transforms torques and angular velocity



$$P_1 = P_2$$

$$T_1 \cdot w_1 = T_2 \cdot w_2 \quad \frac{w_2}{w_1} = \frac{T_1}{T_2} = \frac{N_2}{N_1} = n$$

Hydraulic Transformer



$$\begin{aligned} F_1 &= F_2 \\ P_1 A_1 &= P_2 A_2 \\ \frac{P_1}{P_2} &= \frac{A_2}{A_1} = n \\ P_1 q_1 &= P_2 q_2 \\ \frac{P_1}{P_2} &= \frac{q_2}{q_1} = n \end{aligned}$$

contact us

E-mail :

Ali.zendeabad@gmail.com

Homepage:

Sazendeabad.ir

Telegram:

[@Cyberstudents](https://t.me/Cyberstudents)

